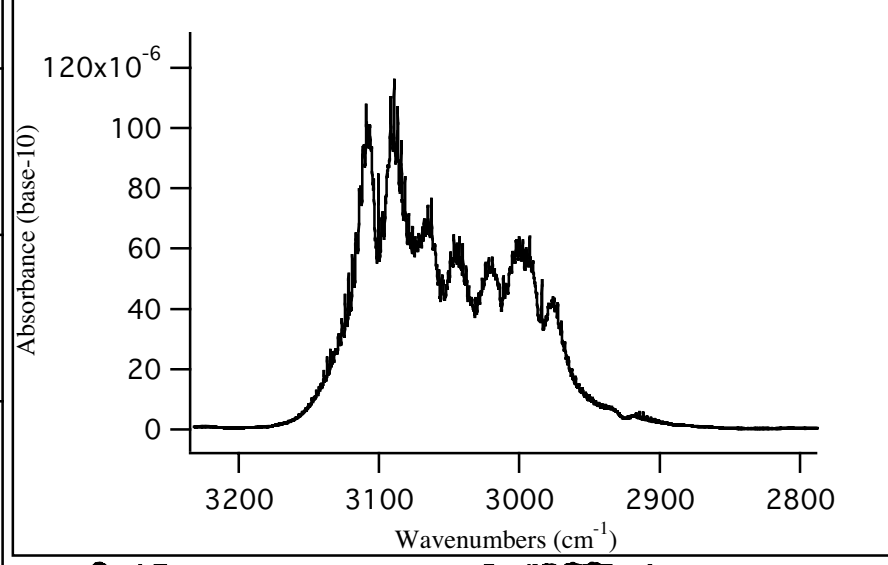
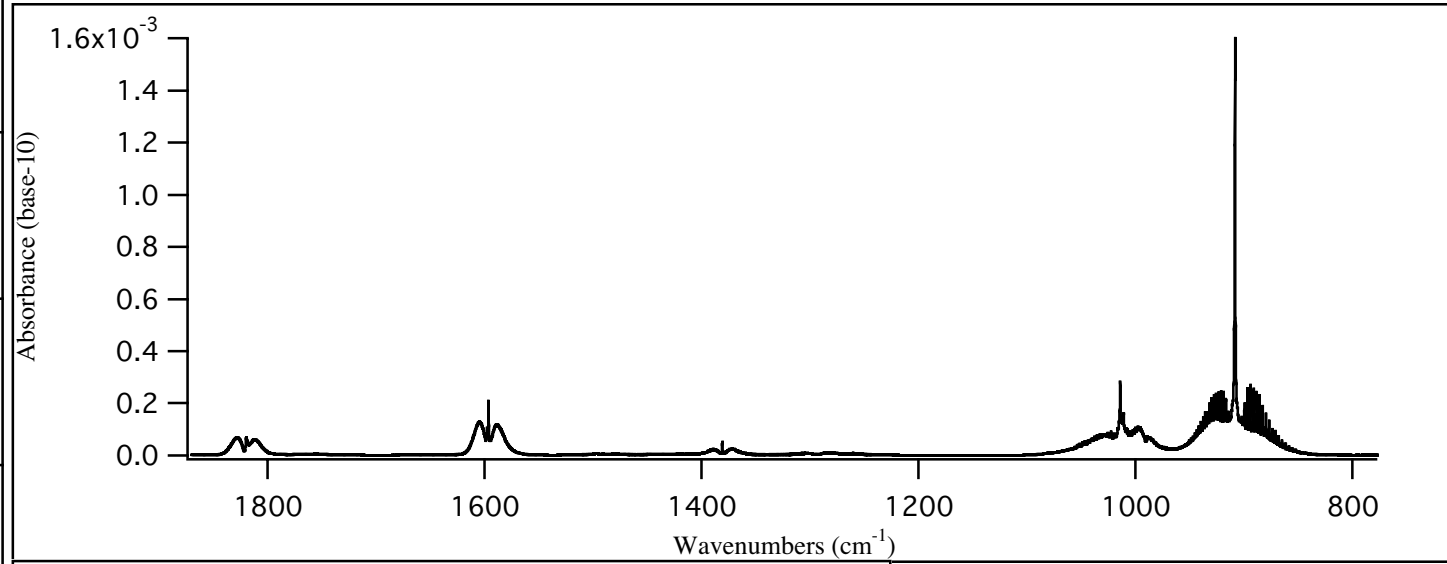


Sample: 1,3-Butadiene (biviny) at 5 C  
Composite spectrum (1 ppm-meter at 296 K)

Absorbance (base-10)

$1.6 \times 10^{-3}$



$0.6$

$0.4$

$0.2$

$0.0$

6000

5000

4000

3000

2000

1000

Wavenumbers (cm<sup>-1</sup>)

Source: Pacific Northwest National Laboratory

